



**Application and Sales Office:**

29235 Lorie Ln. PO Box 1013

Wixom, MI 48393-1013

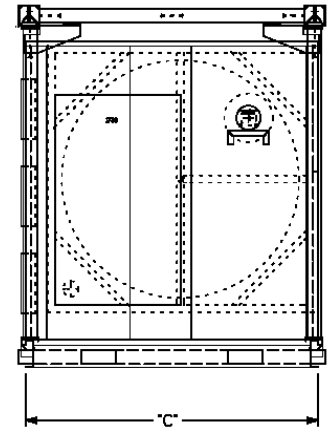
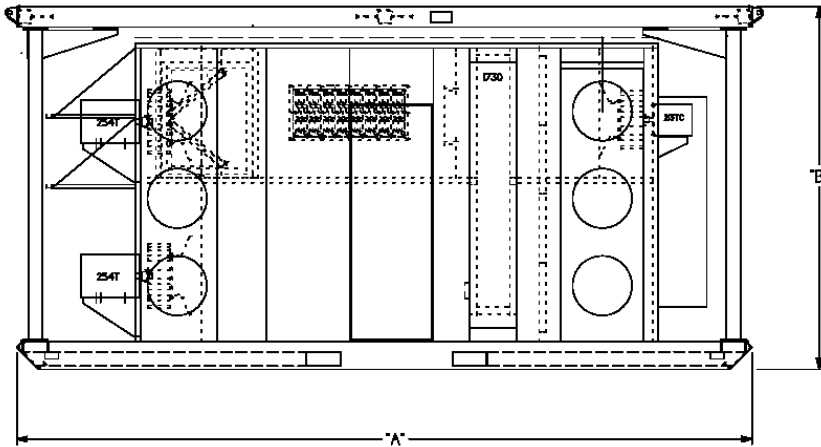
Phone 248-344-7236

Fax 248-344-9401

E-Mail: tbradley@cdims.com

**CDH-R-168-Mobile-Dry Units**

<u>Model</u>	<u>CFM</u>	<u>Fuel Type</u>	<u>"A" Dim.</u>	<u>"B" Dim.</u>	<u>"C" Dim.</u>	<u>Weight</u>
CDH-R-168	15,000	Gas or Electric	158"	62 1/2"	112"	9100 lbs
CDH-R-168	15,000	Dual	180"	62 1/2"	112"	9600 lbs



Air Volume	Static Pressure External	Moisture Removal Lbs/Hr 80°/60% RH	Moisture Removal Gallons/Day 80°/60% RH	Moisture Removal Lbs/Hr 55°/80% RH	Moisture Removal Gallons/Day 55°/80% RH	Moisture Removal Lbs/Hr 40°/80% RH	Moisture Removal Gallons/Day 40°/80% RH
15,000	2.0	424	1,221	355	1,022	242	697

Pipe Size	LP Inlet Pressure	Natural Gas Inlet Pressure	Electric Reactivation Load 230/1/60	Electric Reactivation FLA Load 460/3/60	Gas Reactivation FLA Load 460/3/60	CFH Gas Max Usage NG	Gallon/HR Max Usage LP
1 1/2"	7-14" w.c.	7-14" w.c.	N/A	335	44	1,200	12.7



**Available Accessories:**

- Remote Humidistat
- Cooling Coil Modules
- Heating Coil Modules
- Trailer Mounting with generators
- (3) 18" Round Connections
- (3) 20" Round Connections
- 5.0 Static Pressure External